

Pearson 37





The interior of the Pearson 37 looking forward from the companionway.



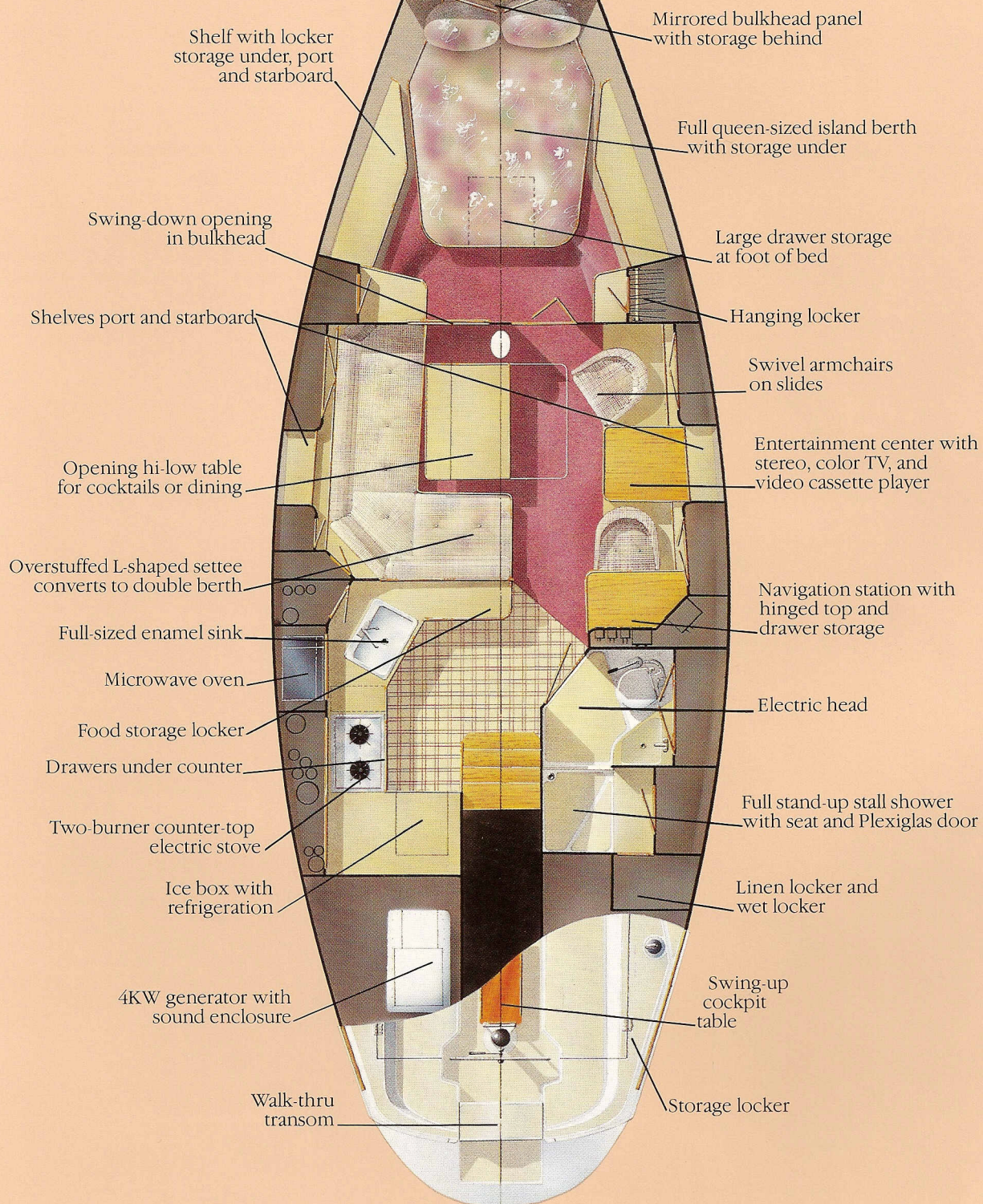
The modern galley with counter-top stove, microwave, and enameled sink.



Comfortable swivel chairs, entertainment center, and navigation station.

Welcome aboard the Pearson 37, a sailboat that represents a whole new level of comfort and cruising performance. Here is a boat that is a total delight to sail with a group of friends or with just two people, thanks to her fully-battened mainsail, self-tacking, roller furling jib, and cockpit-led sail controls. But one look at the interior tells you this is not even half the story.

The Pearson 37 is one sailboat you will honestly enjoy living aboard. Plush carpeting, swivel chairs, a full island berth, bright warm colors, good lighting, and an array of modern conveniences are just a few of the features that make this boat so inviting. Think of the Pearson 37 as a second home on the water that also sails very well.

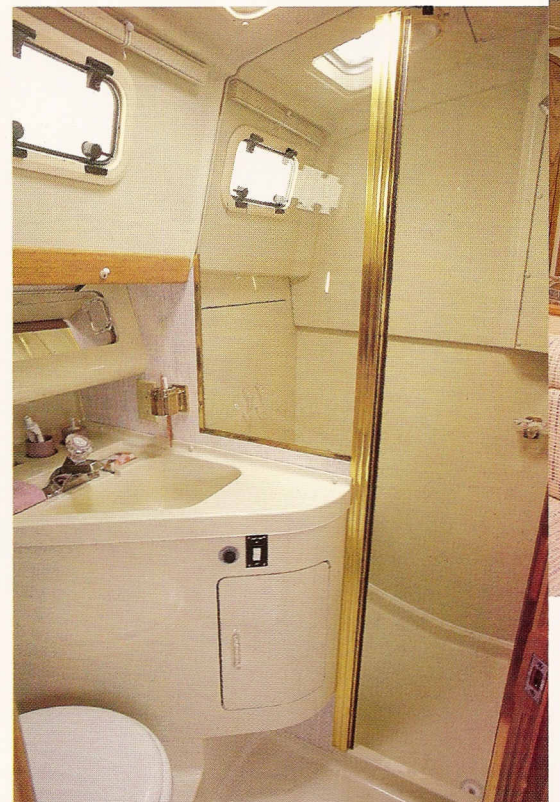




The Pearson 37 under sail is easily driven with her self-tacking jib and fully-battened mainsail.



The queen-size island berth in the forward stateroom.



A roomy head with full stall shower.

The Boat. For many of today's sailors traditions of the past are not important. They want the same amenities on their boats that make their cars and homes more comfortable and fun to use. They also want quality and the same modern conveniences they're accustomed to at home without sacrificing practicality in the form of low maintenance and overall value.

Up until now only the powerboat segment of the marine industry has seriously addressed these requirements by incorporating in their designs the professionally decorated interiors, custom styling, comfortable seating and sleeping accommodations, modern appliances, and state-of-the-art audio and video systems.

We set out to create a top-quality sailboat that encompassed these basic attributes while still retaining the ability to perform well under sail.

The result is the new Pearson 37. And the execution, I'm proud to say, has exceeded expectations. Convenience, style, and comfort show up virtually everywhere on the Pearson 37. The deck layout and rig are designed for cruising short-handed in a wide range of wind conditions. The roller furling Solent jib is self-tacking (a larger overlapping genoa can be added). The mainsail is fully-battened and includes lazy jacks for easy furling. A walk-through transom and swing-down swim ladder make water access a snap. The innovative shallow draft

wing keel opens up shoal water cruising. And Pearson's exclusive Blister-Bloc™ gelcoat below the waterline affords peace of mind against bottom blistering.

The real departure is below decks, where we have completely revamped the comfort factor. You will find wall-to-wall carpeting, swivel armchairs that are a joy to sit in, a settee that is more like an overstuffed couch, plus an entertainment center with a multi-speaker stereo, color TV, and video cassette player. The specially designed hi-low table can be used for dining or cocktails. The futuristic navigation station is engineered to accommodate the latest in marine electronics.

The forward stateroom features a walk-around double berth that is easy to get in and out of and can be left made-up. The spacious galley includes an electric range, microwave oven, and refrigeration. The oversized head aft features a full stall shower and an electric toilet. A 4KW generator comes standard to supply all the electricity needed when shore power is not available. Reverse cycle air conditioning can be ordered as an option.

For the boating enthusiast looking for a whole new level of comfort and ease of handling in a quality sailing yacht, the Pearson 37 is the perfect choice. Here at last is a sailboat that provides all the conveniences of your everyday lifestyle in a floating second home.

Bill Shaw

All new Pearsons come standard with Blister-Bloc™ gelcoat, offering five-year guaranteed protection against bottom blistering. They also come with a hull integrity warranty for as long as you own your boat. See your dealer for details.



Pearson 37

Specifications*

L.O.A. 37' 5"

D.W.L. 29' 7"

Beam 12' 4"

Draft 4' 8"

Displacement 16,000 lbs.

Ballast (wing keel) 6,000 lbs.

Sail Area (main + 100%) 665 sq. ft.

Fresh Water Capacity 100 gals.

Fuel Capacity 37 gals.

Power Diesel

Mast Height Above D.W.L. 52' 0"

Standard Equipment

HULL

- White hull
- External lead ballast—wing keel
- Molded blue boot-top (double stripe)
- Blue cove stripe
- Fixed ports in hull
- Blister-Bloc™ gelcoat

DECK

- Outboard turning hull/deck joint with vinyl trim
- Two-tone beige deck with molded non-skid
- Balsa core
- Foredeck anchor well (accommodates anchor windlass)
- Sail lockers port and starboard
- Modified T-shaped cockpit with removable helmsman seat
- Cockpit-mounted stereo speakers
- Lexan weatherboards with teak trim

MACHINERY

- 34 HP fresh water cooled Yanmar diesel with tachometer, high water temp and low oil pressure alarms
- Two-blade solid propeller on 1 1/4" diameter bronze shaft

TANKAGE & PLUMBING

- FRP and plastic water tanks (three-tank system)
- Hot and cold pressure water with shower
- Six-gallon hot water heater
- Manual diaphragm-type bilge pump (1 1/2") mounted in cockpit
- Aluminum fuel tank with cockpit fill
- Bronze ball valves on all underwater thru-hulls
- 25-gallon plastic holding tank with offshore discharge valve
- Water purifier

ELECTRICAL

- Navigation lights
- Anchor light
- Interior lights
- D C electrical panel with branch circuit breakers
- 110V AC 50 amp shore power system with cord and outlets (five)
- 110V AC electrical panel with main and branch circuit breakers

- Coaxial cable led to navigation center
- Entertainment center with six-speaker stereo and 13" color TV and VCP
- Conduits, messengers, and power wires for dealer-installed electronics
- Converter
- 4KW generator with sound enclosure
- Electric bilge pump

STEERING

- Pedestal type with stainless steel destroyer wheel (36"), brake, and guard
- 5" compass (pedestal mount)
- Emergency tiller
- Pedestal-mounted clutch and throttle controls

DECK HARDWARE

- Self-tailing mainsheet winch (Lewmar #40 ST)
- Self-tailing primary winches (Lewmar #52 ST)
- Jibsheet winch (Lewmar #30) and roller furler winch (Lewmar #8)
- Double bow rail
- Split stern rail (double rail) with swim ladder
- Double lifelines
- Boarding gate
- Dual bow chocks and cleats
- Dual stern cleats
- Midship chocks and cleats
- Cabin-top traveller with tag lines
- Teak toe rail with end castings
- Plexiglas companionway hatch
- Forward hatch—aluminum framed
- Midship hatches—aluminum framed
- Vent hatch in head—aluminum framed
- Vent hatch over galley—aluminum framed
- Fiberglass seahood
- Five small opening ports—aluminum framed
- Four large opening ports—aluminum framed
- Teak handrails
- Two fixed ports—aluminum framed
- Solent jibsheet and roller furler winches
- Sheet stoppers for reef lines, sheets, and halyards
- Flagpole socket
- Winch island alcoves
- Stemhead casting with tack shackles
- Recessed inboard genoa track with double cars
- Hot and cold pressure deck shower

SPARS & RIGGING

- Double swept spreader masthead rig
- Tapered spar
- Internal wire rope and jib halyards led aft
- Continuous line internal jiffy reefing led aft
- Harken roller furling
- Fully-battened mainsail and Solent jib
- Self-tacking jib deck hardware
- Jib halyard and outhaul winches

INTERIOR—GENERAL

- Vinyl headliner—with wood trim
- Oak lee rails and trim
- Vinyl-lined lockers
- Submarine cabin doors with laminated frames
- Shades—all ports

FORWARD CABIN

- Island bed with stowage under
- Locker and shelf stowage port and starboard
- Bureau
- Hanging locker
- Carpeted sole and hull sides
- Bedspread
- Mirrored bulkhead panel (pivots down)

MAIN CABIN

- L-shaped dinette to port (converts to double)
- Backrest stowage port and starboard
- Swivel chairs to starboard with table
- Locker stowage port and starboard
- Shelf stowage port and starboard
- Entertainment center console
- Plush carpeting throughout
- Companionway handrails

GALLEY

- Two-burner counter-top electric stove
- Microwave oven
- Locker storage outboard
- 7 cu. ft. ice box with refrigeration and shelf storage
- Enameled sink with single large bowl
- Drawer and locker stowage
- Dishrack
- Bar

NAVIGATION CENTER

- Chart table with hinged top and drawer storage under
- Hinged electrical panel/electronics locker

HEAD

- Full length (15" x 48") mirror
- Shower stall with seat, linen locker, and wet locker outboard
- Hinged Plexiglas shower door
- Molded vanity top with sink
- Lockers outboard with mirrored doors
- Head hardware

OPTIONS

- Optional hull colors
- Optional interior color plans
- Air conditioning—reverse cycle
- Auto pilot
- Anchor windlass and bowsprit
- Dockside water
- Outboard genoa tracks
- Garbage disposal
- Perma-pub bar
- Salt water washdown



PEARSON YACHTS